



株式会社 東京放送ホールディングス
TOKYO BROADCASTING SYSTEM HOLDINGS, INC.



Quarterly Fact Sheet 2010

ファクトシート
四半期毎更新

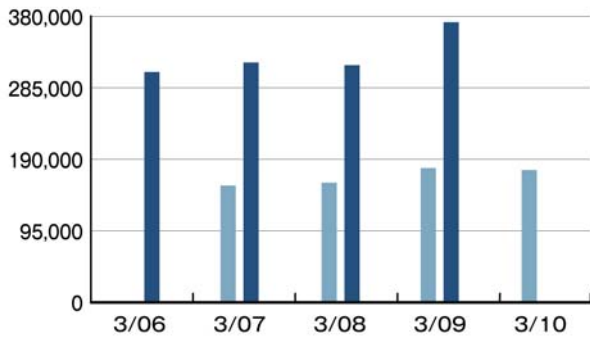
2010年3月期 / March, 2010
第2四半期 / 2nd Quarter
4-9月期 / April-September period

Last Update: 2009年11月5日 / November 5, 2009

Earnings Highlights<Consolidated>

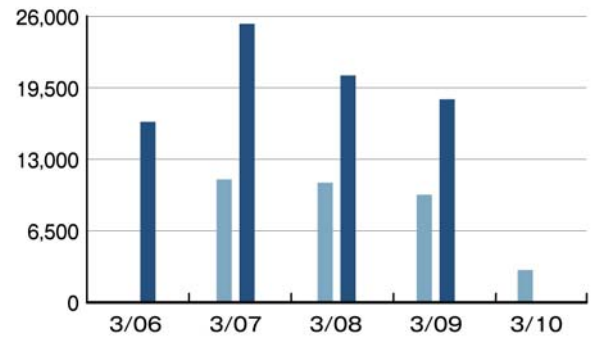
2nd Quarter Full Year

Sales (¥ 1 million)



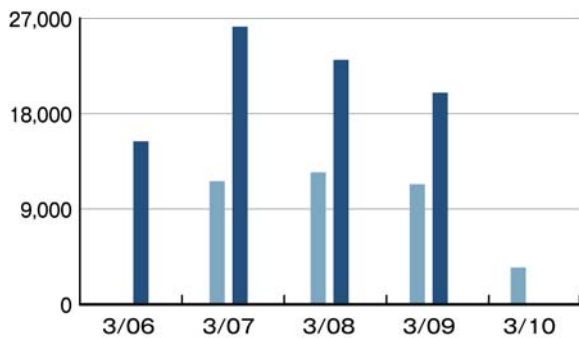
	3/06	3/07	3/08	3/09	3/10
Full Year	306,041	318,700	315,175	372,306	-
2nd Quarter	-	155,105	158,861	178,409	175,709

Operating Income (¥ 1 million)



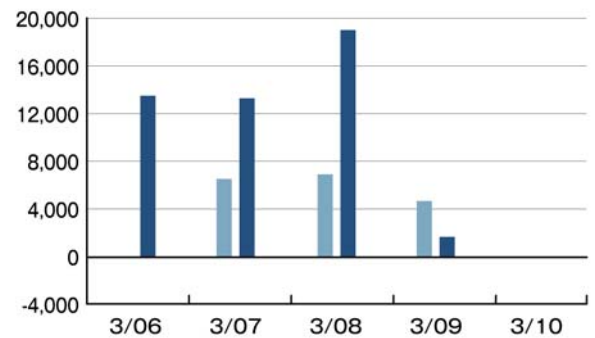
	3/06	3/07	3/08	3/09	3/10
Full Year	16,404	25,327	20,624	18,457	-
2nd Quarter	-	11,176	10,867	9,778	2,933

Ordinary Income (¥ 1 million)



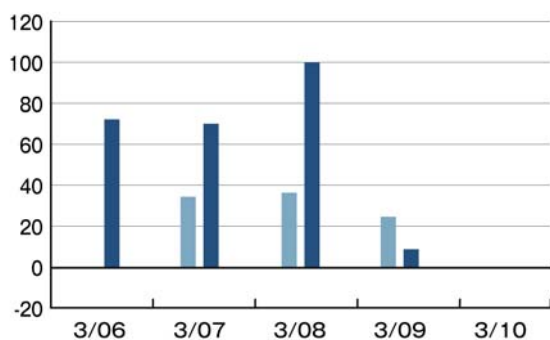
	3/06	3/07	3/08	3/09	3/10
Full Year	15,388	26,216	23,088	19,979	-
2nd Quarter	-	11,612	12,459	11,334	3,462

Net Income (¥ 1 million)



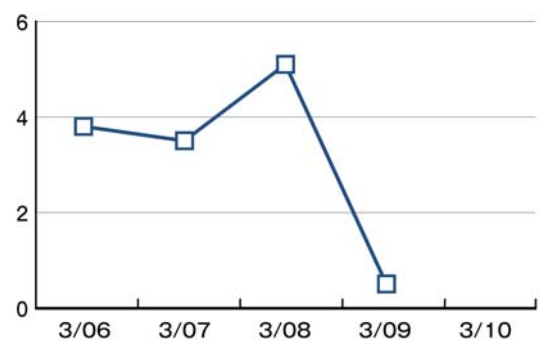
	3/06	3/07	3/08	3/09	3/10
Full Year	13,513	13,299	19,022	1,655	-
2nd Quarter	-	6,523	6,906	4,675	(90)

Earnings Per Share (¥)



	3/06	3/07	3/08	3/09	3/10
Full Year	72.17	70.07	100.14	8.71	-
2nd Quarter	-	34.38	36.36	24.61	(0.48)

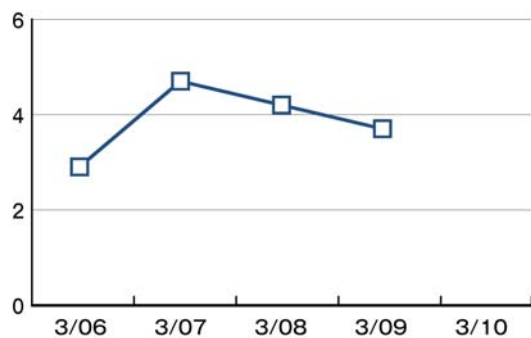
Return On Equity (ROE) (%)



	3/06	3/07	3/08	3/09	3/10
Full Year	3.8	3.5	5.1	0.5	-
2nd Quarter	-	-	-	-	-

* The above data is updated each full year.

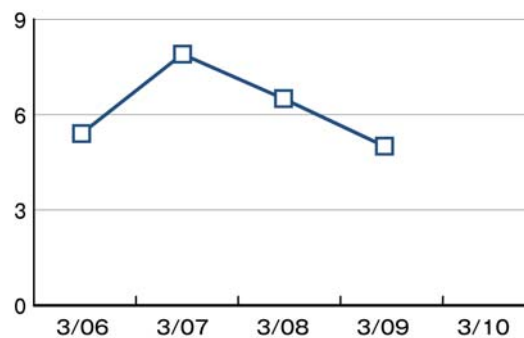
■ Ordinary Income to Total Assets Ratio (ROA) (%)



	3/06	3/07	3/08	3/09	3/10
Full Year	2.9	4.7	4.2	3.7	-
2nd Quarter	-	-	-	-	-

* The above data is updated each full year.

■ Operating Income to Sales Ratio (%)



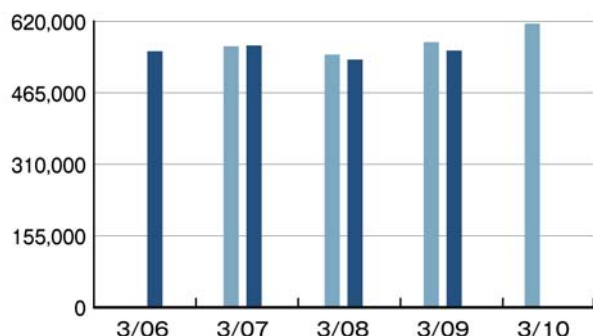
	3/06	3/07	3/08	3/09	3/10
Full Year	5.4	7.9	6.5	5.0	-
2nd Quarter	-	-	-	-	-

* The above data is updated each full year.

■ Financial Position<Consolidated>

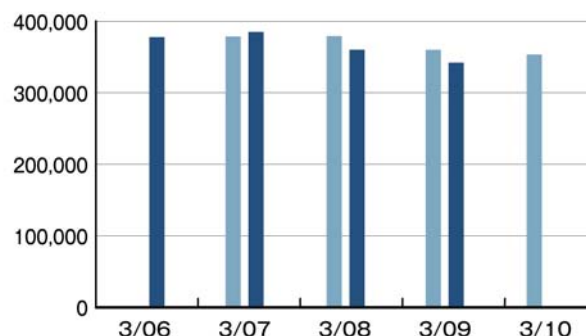
■ 2nd Quarter ■ Full Year

■ Total Assets (¥ 1 million)



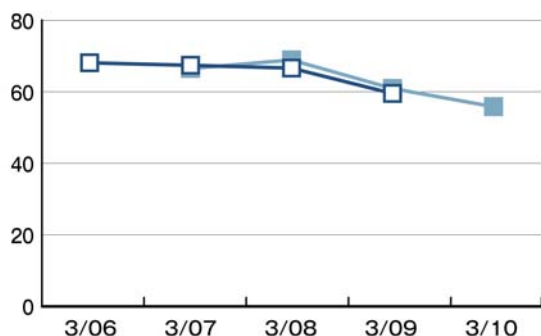
	3/06	3/07	3/08	3/09	3/10
Full Year	555,271	567,722	537,211	556,780	-
2nd Quarter	-	566,093	547,981	575,225	615,283

■ Net Assets (¥ 1 million)



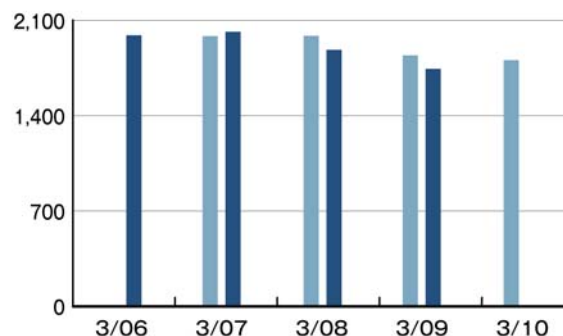
	3/06	3/07	3/08	3/09	3/10
Full Year	378,026	385,298	360,376	342,231	-
2nd Quarter	-	378,912	379,458	360,232	353,649

■ Equity Ratio (%)



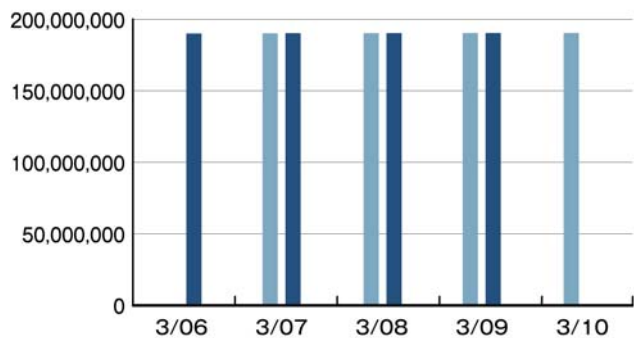
	3/06	3/07	3/08	3/09	3/10
Full Year	68.1	67.4	66.6	59.5	-
2nd Quarter	-	66.5	68.9	60.9	55.8

■ Net Assets per Share (¥)



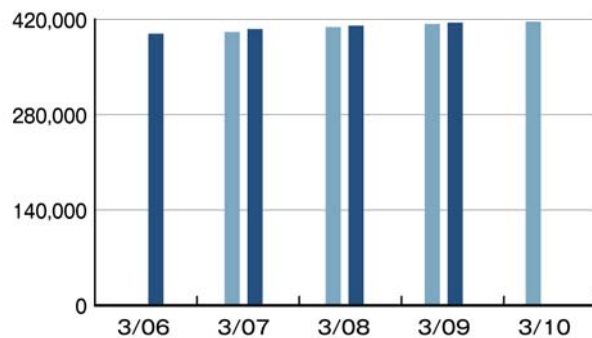
	3/06	3/07	3/08	3/09	3/10
Full Year	1,990.91	2,016.23	1,884.02	1,743.69	-
2nd Quarter	-	1,984.49	1,986.82	1,842.82	1,807.32

■ Shares Issued at Term-End[Including Treasury Stock] (shares)



	3/06	3/07	3/08	3/09	3/10
Full Year	190,138,968	190,307,968	190,406,968	190,434,968	
2nd Quarter	-	190,174,968	190,378,968	190,434,968	190,434,968

■ Treasury Stock at Term-End (shares)

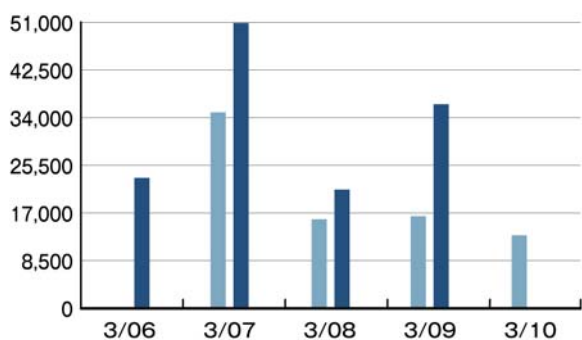


	3/06	3/07	3/08	3/09	3/10
Full Year	398,968	405,817	410,731	415,314	
2nd Quarter	-	401,411	408,615	413,253	416,597

■ Cash Flow<Consolidated>

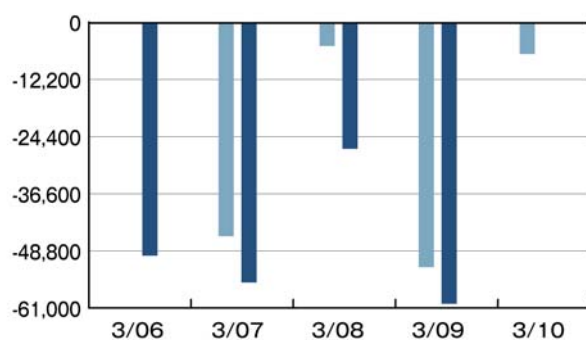
■ 2nd Quarter ■ Full Year

■ Operating Cash Flow (¥1 million)



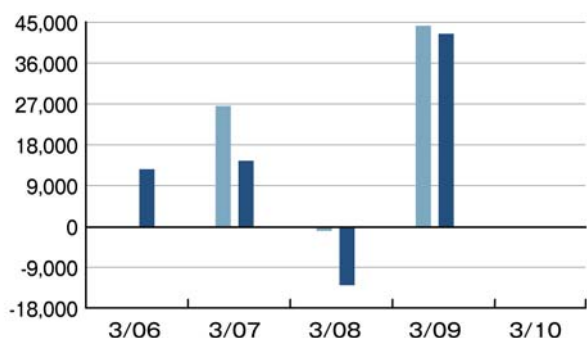
	3/06	3/07	3/08	3/09	3/10
Full Year	23,261	50,886	21,174	36,406	
2nd Quarter	-	34,950	15,862	16,408	13,007

■ Investing Cash Flow (¥1 million)



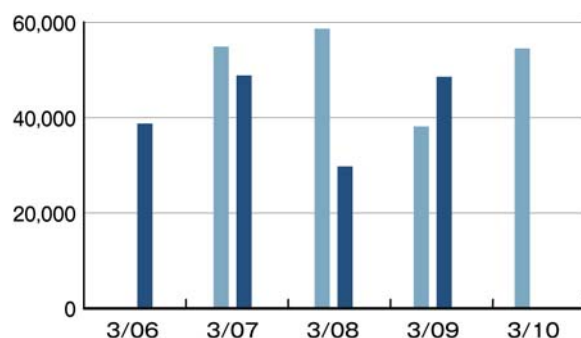
	3/06	3/07	3/08	3/09	3/10
Full Year	(49,817)	(55,543)	(27,011)	(60,082)	
2nd Quarter	-	(45,661)	(5,055)	(52,275)	(6,780)

■ Financing Cash Flow (¥1 million)



	3/06	3/07	3/08	3/09	3/10
Full Year	12,619	14,490	(12,973)	42,493	
2nd Quarter	-	26,597	(1,007)	44,244	(243)

■ Cash and Equivalents at End-Term (¥1 million)



	3/06	3/07	3/08	3/09	3/10
Full Year	38,767	48,866	29,764	48,571	
2nd Quarter	-	54,915	58,658	38,160	54,512

 Earnings Highlights<Consolidated>

		3/06	3/07	3/08	3/09	3/10
Sales (¥1 million)	Full Year	306,041	318,700	315,175	372,306	
	3rd Quarter	-	240,107	237,646	280,597	
	2nd Quarter	-	155,105	158,861	178,409	175,709
	1st Quarter	-	80,619	79,402	78,630	87,190
Operating Income (¥1 million)	Full Year	16,404	25,327	20,624	18,457	
	3rd Quarter	-	21,099	18,858	19,499	
	2nd Quarter	-	11,176	10,867	9,778	2,933
	1st Quarter	-	8,644	8,943	4,632	2,562
Ordinary Income (¥1 million)	Full Year	15,388	26,216	23,088	19,979	
	3rd Quarter	-	22,105	21,590	21,662	
	2nd Quarter	-	11,612	12,459	11,334	3,462
	1st Quarter	-	9,289	10,426	6,318	3,337
Net Income (¥1 million)	Full Year	13,513	13,299	19,022	1,655	
	3rd Quarter	-	12,639	19,285	5,379	
	2nd Quarter	-	6,523	6,906	4,675	(90)
	1st Quarter	-	5,315	6,160	3,664	1,830
Earnings Per Share (¥)	Full Year	72.17	70.07	100.14	8.71	
	3rd Quarter	-	66.60	101.52	28.31	
	2nd Quarter	-	34.38	36.36	24.61	(0.48)
	1st Quarter	-	28.01	32.44	19.29	9.63
Return On Equity (ROE) (%)	Full Year	3.8	3.5	5.1	0.5	
	3rd Quarter	-	-	-	-	
	2nd Quarter	-	-	-	-	-
	1st Quarter	-	-	-	-	-
Ordinary Income to Total Assets Ratio (ROA) (%)	Full Year	2.9	4.7	4.2	3.7	
	3rd Quarter	-	-	-	-	
	2nd Quarter	-	-	-	-	-
	1st Quarter	-	-	-	-	-
Operating Income to Sales Ratio (%)	Full Year	5.4	7.9	6.5	5.0	
	3rd Quarter	-	-	-	-	
	2nd Quarter	-	-	-	-	-
	1st Quarter	-	-	-	-	-

 Dividends

	Dividend Per Share(¥) [Commemorative Dividend]					Total Dividend Payment [Full-Year] (¥1 million)	Dividend Payout Ratio [Consolidated] (%)	Dividend to Net Assets [Consolidated] (%)
	1st Quarter	2nd Quarter	3rd Quarter	Term-End	Full-Year			
3/10	- [-]	0.00 [-]						
3/09	- [-]	8.00 [-]	- [-]	2.00 [-]	10.00 [-]	1,904	114.8	0.6
3/08	- [-]	12.00 [-]	- [-]	12.00 [-]	24.00 [-]	4,568	24.0	1.2
3/07	- [-]	6.00 [-]	- [-]	6.00 [-]	12.00 [-]	2,282	17.1	0.6
3/06	- [-]	11.00 [-]	- [-]	11.00 [-]	22.00 [-]	4,181	30.5	1.1

 Financial Position<Consolidated>

		3/06	3/07	3/08	3/09	3/10
Total Assets (¥1 million)	Full Year	555,271	567,722	537,211	556,780	
	3rd Quarter	-	580,098	530,567	567,083	
	2nd Quarter	-	566,093	547,981	575,225	615,283
	1st Quarter	-	555,028	571,662	525,566	570,740
Net Assets (¥1 million)	Full Year	378,026	385,298	360,376	342,231	
	3rd Quarter	-	390,949	376,009	348,197	
	2nd Quarter	-	378,912	379,458	360,232	353,649
	1st Quarter	-	373,360	394,525	364,716	355,639
Equity Ratio (%)	Full Year	68.1	67.4	66.6	59.5	
	3rd Quarter	-	66.8	70.3	59.4	
	2nd Quarter	-	66.5	68.9	60.9	55.8
	1st Quarter	-	66.9	68.7	69.0	60.6
Net Assets per Share (¥)	Full Year	1,990.91	2,016.23	1,884.02	1,743.69	
	3rd Quarter	-	2,042.69	1,964.56	1,773.51	
	2nd Quarter	-	1,984.49	1,986.82	1,842.82	1,807.32
	1st Quarter	-	1,955.78	2,066.49	1,909.00	1,819.19
Shares Issued at Term-End [Including Treasury Stock] (shares)	Full Year	190,138,968	190,307,968	190,406,968	190,434,968	
	3rd Quarter	-	-	-	190,434,968	
	2nd Quarter	-	190,174,968	190,378,968	190,434,968	190,434,968
	1st Quarter	-	-	-	190,434,968	190,434,968
Treasury Stock at Term-End (shares)	Full Year	398,968	405,817	410,731	415,314	
	3rd Quarter	-	-	-	414,361	
	2nd Quarter	-	401,411	408,615	413,253	416,597
	1st Quarter	-	-	-	411,147	416,000

 Cash Flow<Consolidated>

		3/06	3/07	3/08	3/09	3/10
Operating Cash Flow (¥1 million)	Full Year	23,261	50,886	21,174	36,406	
	3rd Quarter	-	39,863	15,439	24,642	
	2nd Quarter	-	34,950	15,862	16,408	13,007
	1st Quarter	-	21,945	1,225	(902)	2,181
Investing Cash Flow (¥1 million)	Full Year	(49,817)	(55,543)	(27,011)	(60,082)	
	3rd Quarter	-	(54,488)	(2,348)	(55,209)	
	2nd Quarter	-	(45,661)	(5,055)	(52,275)	(6,780)
	1st Quarter	-	(30,709)	1,499	(6,361)	(3,952)
Financing Cash Flow (¥1 million)	Full Year	12,619	14,490	(12,973)	42,493	
	3rd Quarter	-	24,962	(2,914)	43,275	
	2nd Quarter	-	26,597	(1,007)	44,244	(243)
	1st Quarter	-	27,151	(1,085)	(2,422)	653
Cash and Equivalents at End-Term (¥1 million)	Full Year	38,767	48,866	29,764	48,571	
	3rd Quarter	-	49,371	59,018	42,421	
	2nd Quarter	-	54,915	58,658	38,160	54,512
	1st Quarter	-	57,392	50,532	20,112	47,442

Please note the following:

1. This site may not be immediately rectified as correction of earnings data and others.
2. Historical per share data were not adjusted to stock splits.
3. From the first quarter of the fiscal year ending March 31, 2009, numerical data are based on the "Accounting Standard for Quarterly Financial Reporting" (ASBJ Statement No. 12) and related regulations.
4. For the fiscal year ended March 31, 2008 and before, corresponding numerical data were disclosed as the interim financial statements.
5. We may only alter some of our financial indicators in our earnings announcements at the end of the fiscal year.

The data used within this site is compiled from the corporate prospectus and earnings announcements. In the preparation of the various data shown within this site, we make every effort to ensure its accuracy. But despite our best efforts, the possibility for inaccuracy in the data due to reasons beyond our control exists. For more detailed earnings information please click on the "IR Library" link button.